

Coming Events

AUTOCROSS, BEER,
BRATS, TRAINRIDE,
PLUS THE RESURECTION
OF HORSCHÉ-PORSCHE

Summer is here
and do we have plans.
We have not one, but
two exciting events
planned for June.

Sunday, June
10th, we have our
June Boone Sprints
autocross at
Clemmons Chevrolet
in Boone. Starting
time is 1:30. Thats
not all though.....
After we lay long
black lines all over
the parking lot,
there is a lot more
planned. At about
3:30, we will head
down the street to
George and Becky
Eckstein's house
(503 S. Story ST.)
for a beer and
bratwurst feast.
Than at 5:00 we
will go for a
train ride through
the scenic Des Moines
river valley on the
Boone & Scenic Valley
Railroad. The trip
is 10 1/2 miles
long and takes a
little more than an
hour. It features a
lot of breathtaking
scenery and a ride
across the highest

single track inter-
urban bridge in the
country.

The brats & beer
are free but there
is a charge for the
train ride. Adults
are \$6.00, children
5-15 are \$3.00 and
children under 5 are
free in arms.

Then, on June
23 & 24, Horsche
Porsche returns. A
caravan will leave
Des Moines on
Saturday morning June
23 and arrive in
Omaha in time for
the horse races at
Ak-Sar-Ben that
afternoon. The group
will then have dinner
and spend the evening
in Omaha. Sunday,
we will join the
Great Plains Region
for an autocross,
then return home.

Anyone who is
interested in
this trip should call
Sid Jepson right away
so that he can make
all the necessary
reservations. His
number is 277-2714.

Sounds like a
great month, see
you there.

Tom Hiett

SUMMER EVENTS

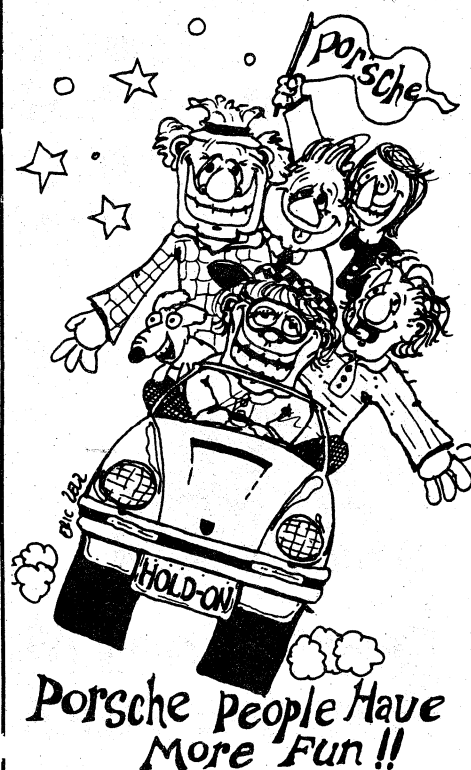
June 10 June Boone
Sprints (Autocross
beer, brats &
train ride in
Boone)

June 23 & 24
Horsche Porsche
(Horse racing
and autocross in
Omaha)

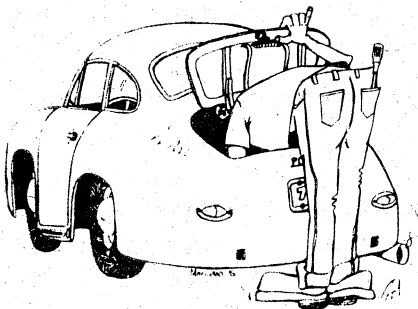
July 8-14 29th
Annual Porsche
Parade in
Appleton, Wis.

July 29th Rally
in Des Moines.

Aug. 12 Autocross
at ISU.



Tech Tips / Gassin' with The Bean Sid Jepson



SUMMER MAINTENANCE

1. Now is the time to make the change to summer weight oil. for your air-cooled engines, 20W50 or straight 40 weight. For water cooled-20W50.

2. There is a new product out on the market that I would like to bring to your attention.

Valvoline is making anew oil calles "Turbo V" (that's 5). It is recommended for all engines but particularly for all turbo charged engines whether gasoline or diesel. It has excellent resistance against crystalization during the critical heat soak down period after the turbo charged engine is turned off. This oil can withstand 600° F without any signs of crystalization.

3. For you water pumpers, ncw is the time to drain your coolant and replenish it with fresh anti-freeze mixed 50/50 with water, preferably distilled water.

4. Air conditioning systems should be checked for freon level and drive belt conditions and adjustments.

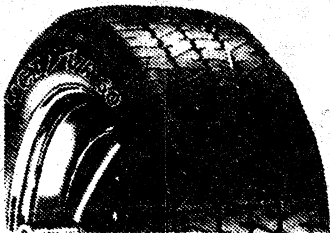
5. It is a good idea to also check and possibly flush your brake fluid system in preparation of the high summer temperatures.

6. At this time of the year we also experience the presence of numerous Iowa potholes and various caverns in our highways. If you cannot avoid a pothole or bad railroad crossing, be sure to do all your braking before you reach the hole and then allow the car to coast threw the cranny. This allows the tires to better absorb the shock and will better protect against damage to your suspension, tires, or rims.

Attention PCA members:

**Now you can get every
Goodyear that we have in stock
at our cost plus 10%!**

GOODYEAR



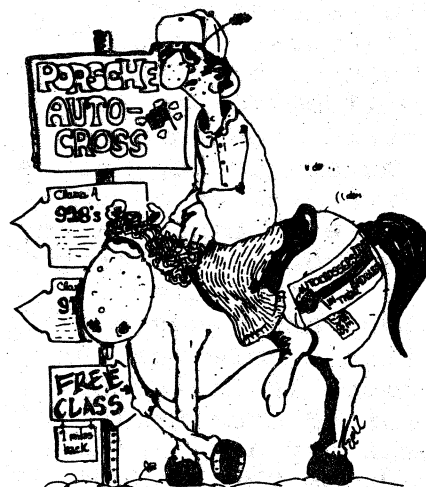
We're making this offer because we want to see all our PCA friends riding on great handling Goodyears.

Prices include F.E.T.
Mounting and balancing are extra.
Be sure to show your PCA card.

Be sure to visit our newly expanded parts and accessories department soon!

**Des Moines Mazda
Porsche+Audi**

90th & Hickman, Des Moines 50322 / 515-278-4776



Attention! Porsche Owners!

If you would like to find out more about the fun of Porsche Club of America membership, contact any member.

Not getting your *Spinner*?

Be sure to notify us, too, when you have a change of address. Send new info to: **Spinner c/o Doug Hillman, 2316 Woodland, WDM, IA 50265.**

Schonesland's Regional Officers

President

Chuck Abbott, (515)233-1979
1505 Jackson, Ames 50010

Vice President

Bob Dideriksen, 232-8654
928 Burnett, Ames 50010

Secretary/Treasurer

Peggy Hiatt, 232-9489
908 Douglas, Ames 50010

Committees

Membership

Bryant Berg 432-3772
427 S. Story, Boone

Safety

Bob Anderson, 795-2648
702 W. 2nd St., Madrid 50156

Technical/Zone 10 Rep

Sid Jepson, 277-2714
4043 Ashby, Des Moines 50310

Spinner Staff

Editor

Tom Hiatt, (515)232-9489
908 Douglas, Ames 50010

Membership Mailing List

Doug Hilman, 225-1158
2316 Woodland, WDM 50265

Assistant Editor

National Newsletter Committee
Ellis Moose, (515)225-1690
2905 Meadow Lane, WDM 50265

"START UP EVENT" MAY 13 AUTOCROSS

MENS 4CYL

Chuck Abbott 1:07.343
George Eckstein 1:08.076
Jeff Lammert 1:08.557
Ellis Moose 1:09.025
Bob Dideriksen 1:10.446

MENS 6CYL

Jim Caligiuri 1:07.624
Dave Pitts 1:17.940

LADIES

Paula Abbott 1:07.618

STANDINGS AFTER 1ST EVENT

MEN

Chuck Abbott 10pts
Jim Caligiuri 10pts
George Eckstein 9pts
Dave Pitts 9pts
Jeff Lammert 8pts
Ellis Moose 7pts
Bob Dideriksen 6pts

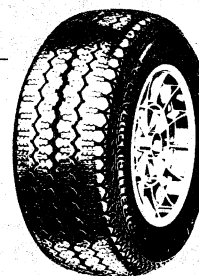
LADIES

Paula Abbott 10pts

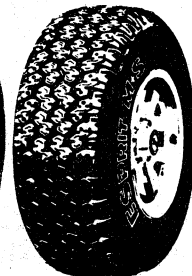


PICCADILLY SPOKE & TREAD

Size	Tigar All Season	Pirelli	Kleber Mud & Snow
155 x 12	34.30	40.66	41.36
145 x 13	34.44	36.14	40.85
155 x 13	34.71	45.49	43.63
165 x 13	38.22	48.31	46.48
165 x 14	40.92	52.07	53.04
175 x 14	42.30	53.09	57.45
185 x 14	46.39	55.86	59.96
165 x 15	46.39	53.95	54.68
16570 x 13	40.73	46.64	Sub. 145 x 13
17570 x 13	41.77	48.76	52.38
18570 x 13	45.77	54.06	55.91
18570 x 14	46.98	55.12	62.61
19570 x 14	50.07	63.60	67.91
20570 x 14	N/A	90.01	70.20
18570 x 15	N/A	63.60	N/A



Pirelli P3
40,000 Mile
Warranty



Kleber Snow
Special
Ice-Sticking Rubber

Tigar All-Season Picture Not Available

PICCADILLY SPOKE & TREAD

1110 Locust
Des Moines, Iowa 50309

BOONE & SCENIC VALLEY RAILROAD

BOONE



IOWA

**THE NATION'S NEWEST SHORTLINE
TOURIST RAILROAD THROUGH THE
SCENIC DES MOINES RIVER VALLEY**



PORSCHE

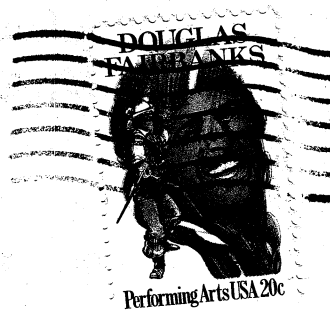


Schönesland Region

908 Douglas
Ames, Iowa 50010

COME RIDE THE TRAIN
THROUGH THE HEARTLAND
OF IOWA ON JUNE 10th

*The "SPINNER" is the official publication
of Schönesland Region of the Porsche Club
of America. The views expressed herein are
those of the authors, and not necessarily
those of the Region or PCA.*



George Eckstein
819 Story St,
Boone, IA 50036