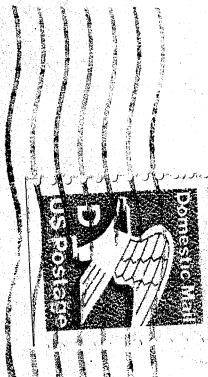




Schönesland  
Region

Schönesland Region  
908 Douglas  
Ames, IA 50010



George & Becky Eckstein  
819 Story Street  
Boone, IA 50036

SPIRIT

THE OFFICIAL PUBLICATION OF  
SCHÖNESLAND REGION,  
PORSCHE CLUB OF AMERICA  
March 1985

The Spinner is the official publication of the Schonesland Region of the Porsche Club of America. The views expressed herein are those of the authors, and not necessarily those of the Region or PCA.

# SCHONESLAND'S REGIONAL OFFICERS

## PRESIDENT

Dave Pitts  
2307 Pleasant St.  
WDM, IA 50265  
(515)225-0056

## VICE PRESIDENT

Stu Lehr  
1435 Park Ave.  
Des Moines, IA 50315  
(515)244-8406

## SEC/TREAS

Peggy Hiett  
908 Douglas  
Ames IA 50010  
(515)232-9489

## COMMITTEES

## MEMBERSHIP

Bob Dideriksen  
928 Burnett  
Ames, IA 50010  
(515)232-8654

## SAFETY

Bob Anderson  
702 W. 2nd ST.  
Madrid, IA 50156  
(515)795-2648

## TECH/ZONE 10 REP

Sid Jepson  
4043 Ashby  
Des Moines, IA 50310

## SPINNER STAFF

## EDITOR

Tom Hiett  
908 Douglas  
Ames, IA 50010  
(515)232-9489

## MAILING LIST

Doug Hilman  
2316 Woodland  
WDM, IA 50265

## ASSISTANT EDITOR

Ellis Moose  
2905 Meadow Lane  
WDM, IA 50265

Moving? Be sure to notify us too. Send new address to: Spinner, c/o Doug Hilman, 2316 Woodland, West Des Moines, IA 50265.

## COMING UP

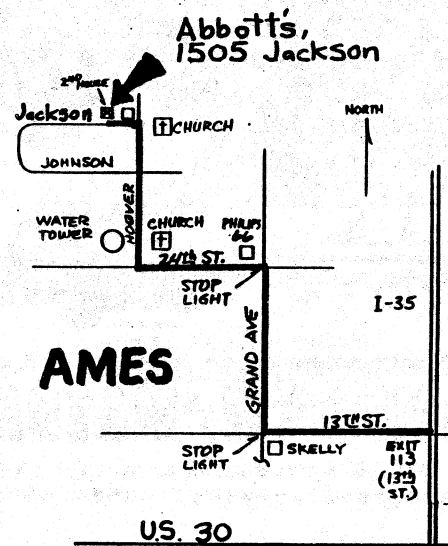
We have two events before the next Spinner, so mark your calendar.

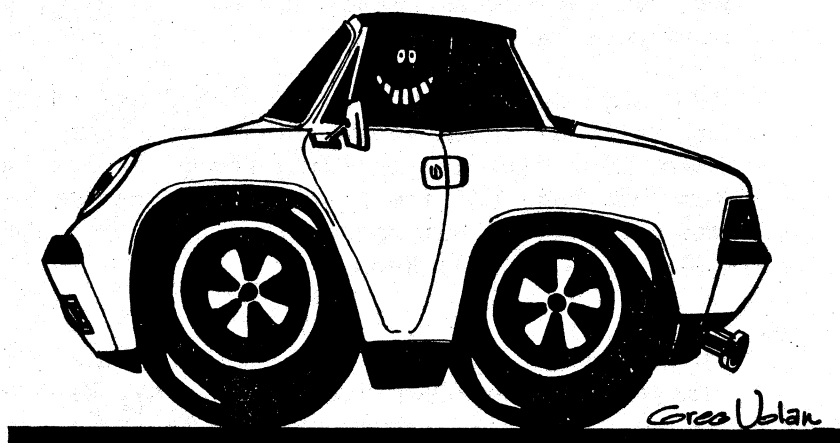
7:00 Saturday, March 30th. Belated St. Patrick's Day party at Chuck and Paula Abbotts house in Ames. The club is providing the pizza and beer. Come and hear all the latest news from the people who went to the War Bonnet Tech Session. The address is 1505 Jackson.

1:30 Sunday, April 14th. Tech Session at Westtown Tire & Service, 2401 Westown Parkway, West Des Moines. George Hartney has invited us to see his new shop. Ace Porsche Mechanic Gary Reed will show us all the new equipment and will demonstrate maintenance and repair of our cars. Lets have a good turn out!

Looking ahead a bit further.....

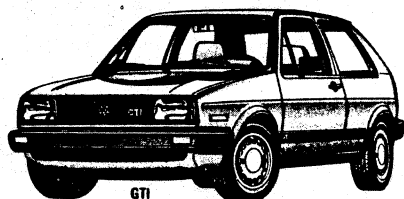
Our first autocross of 85 will be at 1:00PM on April 28th. We are confident thwt old man winter will be long gone by then.





**For Sale: 1981 Porsche 924.** Dark metallic grey, sunroof, AC, factory turbo alloy wheels, 5-speed, power windows and mirrors. Come and get it!

We have the 1985 Motor Trend "Car of the Year", the Volkswagen GTI, as well as VW Sciroccos, Golfs, Jettas and Cabriolets. Check us for Mazda RX7s and 626s and Volvo Turbos.



Special prices to PGA members...just show us your card.

**AMES VW/MAZDA/VOLVO**

Call (515) 252-2551 or Toll Free 1-800-842-4829



## EAGLE GT RADIAL

Steel-belted for serious performance

**DYNAMIC.**  
Big footprint low profile  
race proven tread design

**TOUGH.**  
Quick response, long mileage  
from strong steel cord belts

**PREFERRED.**  
Original equipment on many

1982 Corvette & Datsun  
280ZX, optional on many  
others

**PROVOCATIVE.**  
Outline white letters

**SALE PRICED TO FLY!**



## EAGLE NCT RADIAL

Goodyear's ultimate handling package  
for performance cars.

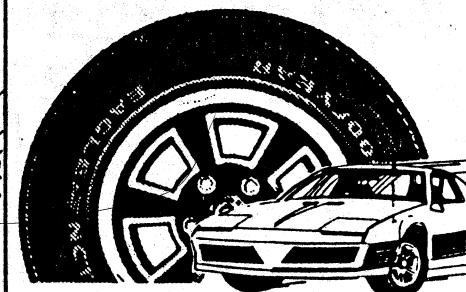
**PRESTIGIOUS.**  
Performance to match the  
world's quickest, most  
responsive sports cars

**STRONG.**  
Stable Durable With Flexten  
cord belts (derived from

aramid, pound for pound  
5 times stronger than steel)

**ELEGANT.**  
Black on black sidewall  
styling

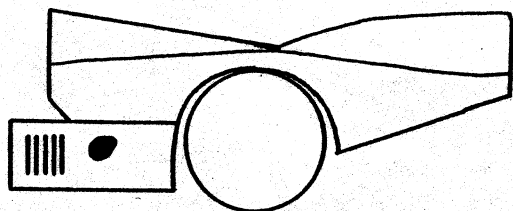
**SALE PRICED TO FLY!**



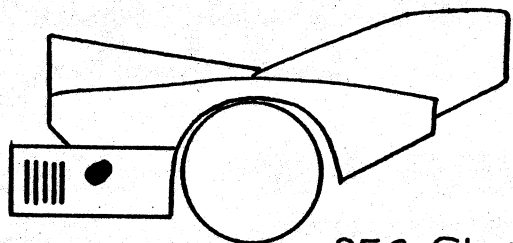
**Westown Tire & Service, Inc.**

2401 Westown Parkway  
West Des Moines, IA 50265  
(515) 224-0060

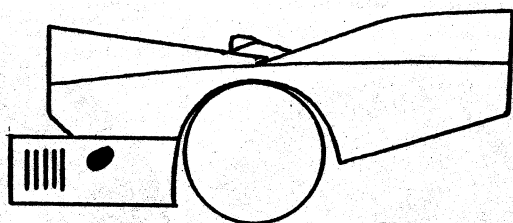
# TAILS by Tom Hiatt



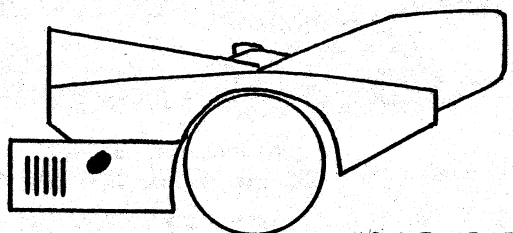
956 Long Tail



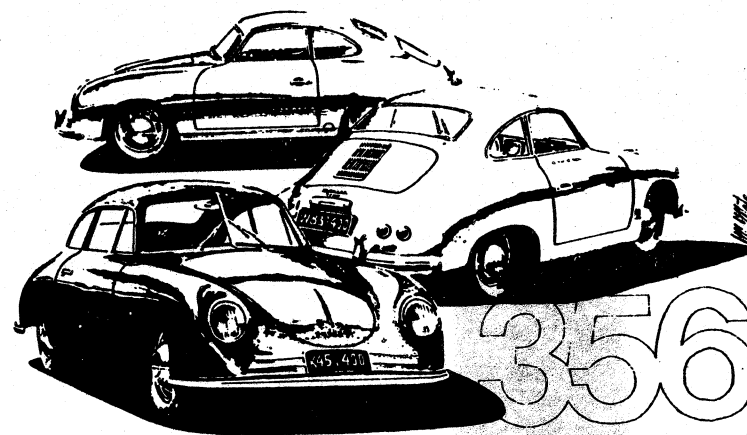
956 Short Tail



962 2.8 Litre



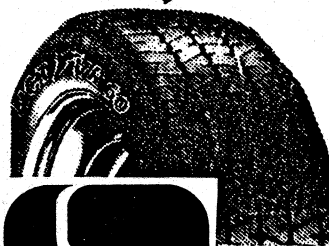
962 3.2 Litre



Attention PCA members:

**Now you can get every  
Goodyear that we have in stock  
at our cost plus 10%!**

**GOODYEAR**



We're making this offer  
because we want to see all our  
PCA friends riding on  
great handling Goodyears.

Prices include F.E.T.  
Mounting and balancing are extra.  
Be sure to show your PCA card.

**SENFCO AUTO CENTER**

90th & Hickman, Des Moines 50322 / 515-278-4776